



KONICA MINOLTA

Office system bizhub C252



bizhub C252

Communication as a team



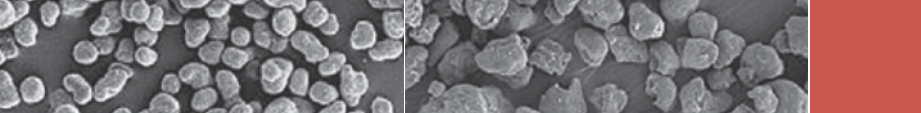
Enhanced communication. Inside and out.

Productive team work in the office is a challenge in itself. For the whole team to interact smoothly and produce results efficiently, each of its members must be capable of multi-tasking, supporting the others and standing in instantly if necessary.

- The bizhub C252 is such a **multi-tasking genius** and this makes it a perfect member of any office team. Despite its compact size and small footprint it performs admirably and impresses with a comprehensive functionality that leaves nothing to be desired.
- Beyond its standard **network printing, scanning, copying and archiving (box) features** – all available in full colour as well as black-and-white – the bizhub C252 can be upgraded with an optional fax functionality, making all the usual single-function devices in the office redundant.
- Thanks to the **unique Open Platform** common to all bizhub products, the bizhub C252 is the perfect all-round communication device and brings affordable colour to the office as well.
- Its innovative **tandem one-pass** process ensures an identical speed of 25 pages per minute for both colour and b/w output.
- An array of **versatile finishing** options allows the completely automatic production of professionally finished documents.
- Use of **Konica Minolta's Simitri®** polymerised toner guarantees a consistently superior output quality, while the bizhub C252's standard Emperon controller ensures its smooth integration into any network environment.

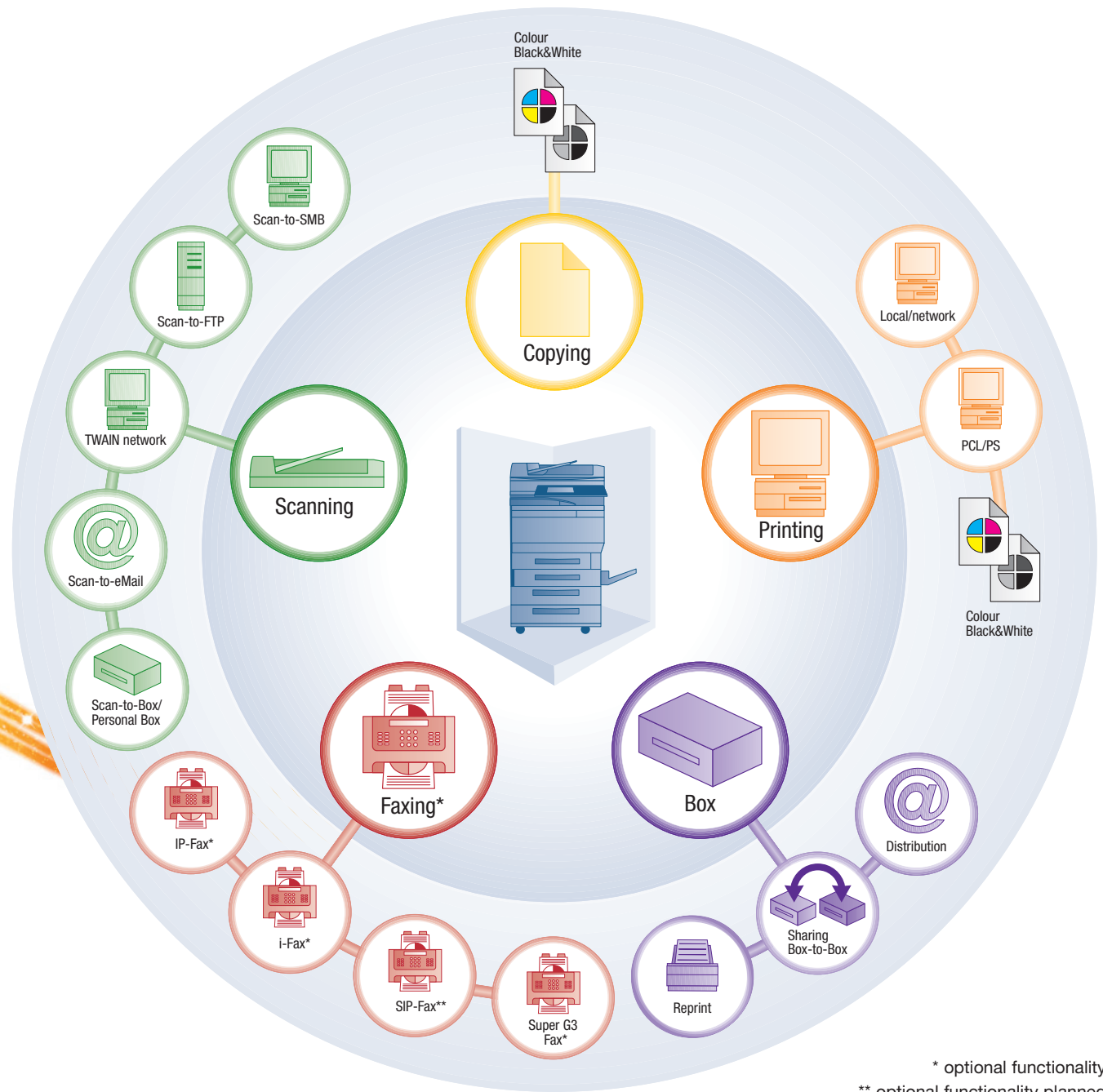
bizhub C252 





Simitri® polymerised toner

Conventional toner



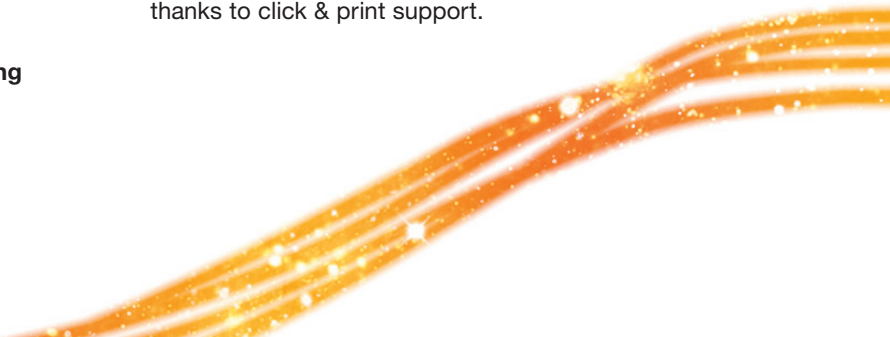
* optional functionality
 ** optional functionality planned

→ Unique: bizhub OP

Konica Minolta's Open Platform truly sets bizhub technology apart from other MFP devices in the market. The unique bizhub OP architecture brings a unified functionality and compatibility to the complete bizhub range, simplifying user operation and facilitating central network administration.

As part of the advanced bizhub OP, Konica Minolta's proprietary **Emperon printing** technology provides a unified platform for the print & scan controller, as well as straightforward network integration, highest stability and powerful performance.

The Emperon print controller brings a comprehensive printing functionality to the office, with both PCL 6C and PostScript 3 standard. Users of the bizhub C252 enjoy the ease of use of unified drivers with intuitive GUIs, that even make the setting of complex print jobs fast and easy; and further benefit from simplified installation thanks to click & print support.





Versatile functionality, advanced communication

A central focus in the office is on the speedy creation and efficient distribution of information. Gone are the days when these tasks were limited to hard originals on paper – today, there are faster and more efficient ways to communicate inside and outside the office. The bizhub C252 is perfectly equipped as an all-round office communicator and excels in all communication disciplines.

- The generous **scanning functionality** on the bizhub C252 comprises scan-to-eMail, -FTP, -SMB and scan-to-Box. Multi-page documents can be scanned via the optional document feeder at one time and automatically saved as a multi-page PDF. Alternatively, Konica Minolta's unique Compact PDF format condenses extensive documents further, for even faster distribution of the information e.g. via eMail. Other available scan formats are JPEG and TIFF.
- An **address book** on the bizhub C252 can store up to 2,100 addresses, making the distribution of scan files even faster and more convenient. Additionally, the bizhub C252's LDAP support enables direct access to the company's eMail database.
- The bizhub C252's comprehensive communication capabilities can be upgraded with an array of advanced **fax functions** (optional). Both analogue (Group 3) and digital fax transmissions are available. In addition, IP fax communication is even possible in colour when communication is between similarly equipped bizhub devices.

- An elaborate **Box functionality** is the basis for most of the bizhub C252's versatile communication capabilities and truly enhances the flow of information inside the team and beyond. For each of up to 1,000 boxes, which can be created on the bizhub C252, accessibility is individually defined, much facilitating the storing, archiving and sharing of scanned, printed, copied and faxed information. Personal User Boxes can only be used by specified individuals and are protected by a box password.
- The bizhub C252's outstanding communication talents really shine when it comes to **printing and copying**. Any document produced on the bizhub C252 is of professional, high quality, with sharp b/w text and bright, colourful illustrations – bringing simply perfect communication capabilities to all every-day office tasks.



Communication with built in user convenience

The time spent on creating and compiling information is vital for an instant and effective communication flow. Getting the message across depends a lot on how the facts are presented. Colour really helps to improve communication, accentuating important details, so the C252 can print, copy and scan in full colour all of your key documents. With its comprehensive functionality the bizhub C252 frees valuable staff time for the team's truly important task, the creation of information!

■ The bizhub C252 impresses with a high level of usability. Its comprehensive **automatic functionality** incorporates a range of convenient features that facilitate and speed up document creation:

- **Auto colour recognition** ensures that only colour pages are printed in colour.
- **Auto paper selection** automatically finds the suitable copy or print size for the hard original or print job.
- **Auto tray switch** avoids interruptions if a tray runs empty, by switching production to the next available tray.
- **Auto zooming** adjusts the print size to suit the page size.

■ Complete **job programmes** for printing, copying and scanning can be saved and recalled at the touch of a button, for example to repeat a print job immediately or whenever required. The simple and straightforward sharing of job settings facilitates and streamlines work for the team.

■ The helpful **PageScope Workware** software further boosts the bizhub C252's ease of use, allowing users an instant overview and easy administration of their documents, and providing a convenient platform to combine documents irrespective of their format, e.g. comprehensive reports with graphics, tables and text.



■ The convenient **Direct Print** feature allows instant downloading of PDF, TIFF, PCL and PostScript files that are then directly sent for printing. There is no need to open an application, and the PC is immediately free again.

■ The **HotFolder functionality** really simplifies the production of professionally finished documents: Print files are simply dragged and dropped into one of the shared HotFolders, each of which can be given individual output settings (e.g. duplex, brochure, punched, etc.).



Unparalleled versatility, creative flexibility

Creativity begins in the mind – the idea is the first step towards communication. Its realisation and implementation are directly related to the capability of the available equipment. With the help and support of the bizhub C252 any team can make the most of its creativity and present its ideas to their best advantage!



- Flexible **media support** is standard on the bizhub C252 and includes the processing of media up to 256 gsm, automatically duplexed too. **Mixmedia** fully automates the combination of different paper qualities at page-level, and mixplex does likewise for simplex and duplex printing within one job.
- The bizhub C252's versatile range of features offers virtually unlimited creative possibilities. With the **multi-page** enlargement function, a logo or image can be turned into extra-large posters of up to 16x A3 size. **Banner printing** lets users create unique displays of up to 1,200 mm length, ideal for spectacular mailings, showroom materials or window displays. And these are just two of many creative examples!

- Despite its compact size the **integrated finishing option** provides an attractive enhancement to the bizhub C252's versatile capabilities. Whether the team needs to produce manuals or reports as complete centre-stapled and folded booklets, or the director needs their 50-page presentation ready stapled and 4-hole-punched in an instant – with the bizhub C252's comprehensive finishing functionality the flexible realisation of creative ideas is easily achieved.

With the bizhub C252 productive team work in the office is now less of a challenge. Konica Minolta's multi-tasking genius – the perfect addition to any team.

→ Print Status Notifier

The Print Status Notifier saves valuable user time, keeping the user informed of device status and job progress. Repeated trips to the printer or waiting there for the job to be finished are a thing of the past!



corner stapling



2-point stapling



two sided printing



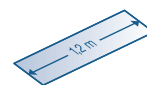
combined mixmedia/mixplex



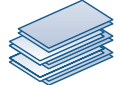
colour sheet insertion, report



booklet

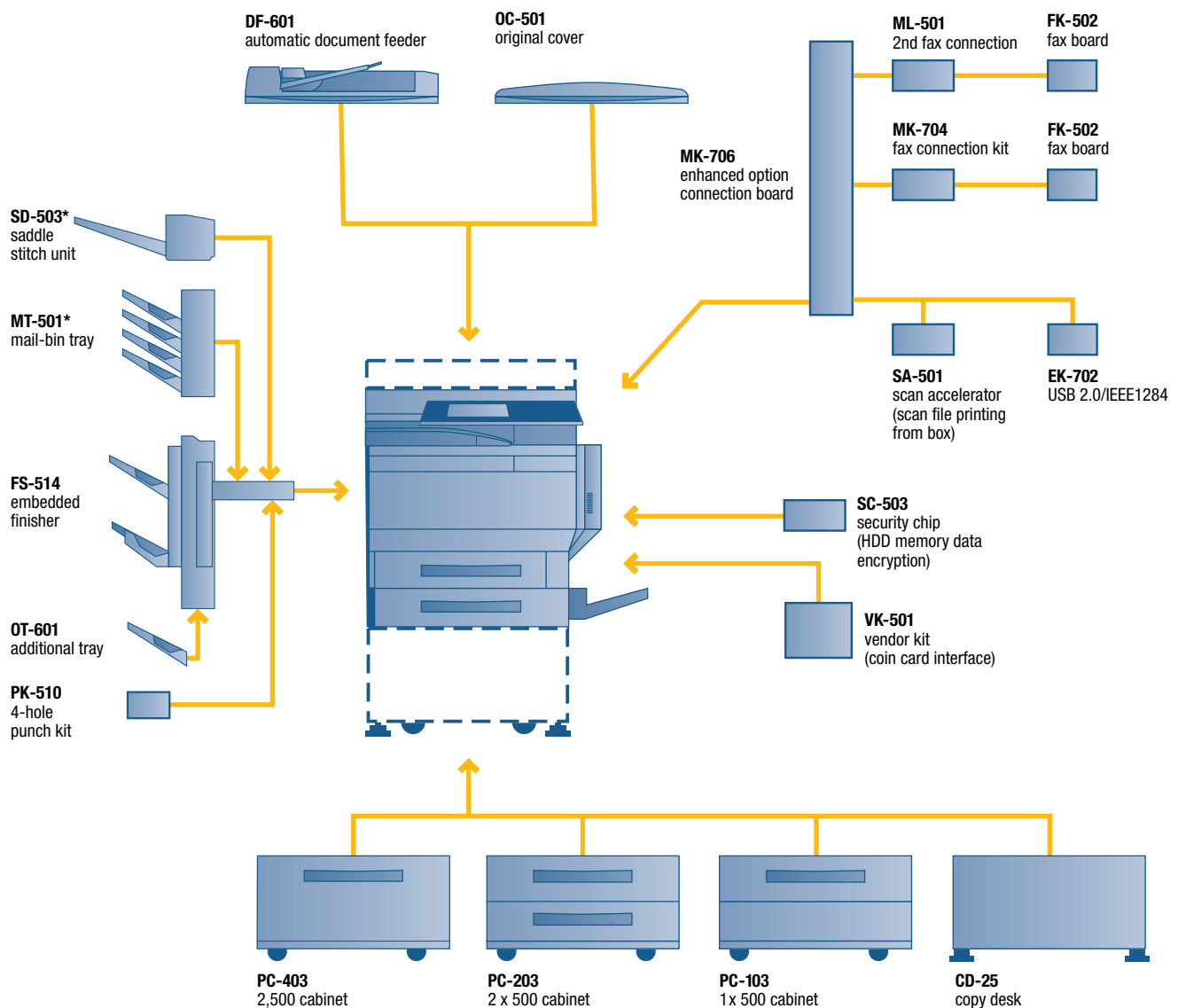


banner printing



offset sorting

Your options at a glance



* either SD-503 or MT-501 can be installed into the FS-514 at one time.



KONICA MINOLTA

Simitri



EPA POLLUTION PREVENTER



Technical specifications

Copier Specifications

Copying process

Electrostatic laser copy
Tandem, indirect

Toner system

Simitri® polymerised toner

Print/Copy speed A4

Colour up to 25 ppm
Mono up to 25 ppm

Print/Copy speed A3

Colour up to 13 ppm
Mono up to 13 ppm

1st Print/Copy time

Colour 11.7 sec. (A4)
Mono 8.4sec. (A4)

Warm-up time

Approx. 110 sec.

Copy resolution

600 x 600 dpi

Gradation

256 gradations

Multi-copy

1-999,
interruption mode

Original format

A5 - A3

Magnification

25-400% in 0.1% steps
Autozooming

Copy functions

Chapter, cover and page insertion
Proof copy
Adjustment test print
Digital art
Job Recall
Job setting memory
Poster Mode

Printer Specifications

Print resolution

Equivalent to 1,800 x 600 dpi

Controller CPU

PowerPC 750FX @ 466 MHz
64 BIT

Page description language

PCL 6C (PCL 5C + XL2.1)
PostScript 3

Operating systems

Windows 98/ME/NT4.0/2000/XP/XP64
Macintosh 9.x/10.x
Server NT4.0/2000/2003
Unix/Linux/Citrix

Print functions

Direct print of PCL, PS; TIFF and PDF files
Mixmedia and mixplex
Job programming "Easy Set"

Scanner Specifications

Scan speed

Colour up to 25 opm (600 dpi via ADF)
Mono up to 25 opm (600 dpi via ADF)

Scan resolution

Max.: 600 x 600 dpi

Scan modes

Network TWAIN scan
Scan-to-eMail
Scan-to-FTP
Scan-to-SMB
Scan-to-Box

File formats

JPEG, TIFF, PDF, Compact PDF, Encrypted PDF

Scan destinations

2,100 (single + group), LDAP support

Scan functions

Annotation (text/time/date) for PDF
Up to 300 job programs

Fax Specifications (optional)

Fax standard

Super G3

Fax transmission

Analogue, i-Fax, IP-Fax, SIP-Fax (planned)

Fax resolution

Max.: 600 x 600 dpi (ultra-fine)

Fax compression

MH, MR, MMH, JBIG

Fax modem

Up to 33.6 Kbps

Fax back-up memory

32 MB

Fax destinations

2,000 Abbreviated Dial
400 One Touch

Fax functions

Polling
Time shift
PC-Fax
Receipt to confidential box
Receipt to email, FTP, SMB

System Specifications

System memory

1,024MB

System hard disc

40 GB

Interface

10-Base-T / 100-Base-TX Ethernet
Parallel IEEE 1284 (optional)
USB 2.0 (optional)

Automatic document feeder (optional)

Up to 100 originals

Paper size

A6-A3 full bleed
Customised paper sizes
Banner paper max. 1,200 x 297 mm

Paper weight

64-256 gsm

Paper input capacity

Standard: 850 sheets
Max.: 3,350 sheets

Automatic duplexing

A5-A3 full bleed
64-256 gsm

Finishing modes (optional)

Offset, group, sort, staple, punch,
centre-fold, booklet, mailbin sort

Power consumption

220-240 V / 50/60Hz
Less than 1.5 KW (system)

System dimensions (W x D x H, mm)

650 x 755 x 771

System weight

Approx. 95kg

System Features

Security

ISO15408 EAL3 (in evaluation)

Accounting

Up to 1,000 user accounts
Active Directory support
(user name + password)
User function access definition

Software

PageScope NetCare
PageScope Data Administrator
PageScope Box Operator
PageScope Workware (Trial)
Direct Print Utility
Print Status Notifier

All specifications relating to paper capacity refer to A4-size paper of 80 gsm quality.

All specifications relating to scanning, copying or printing speeds refer to A4-size paper that is scanned, copied or printed crosswise in multipage, simplex mode.

Some of the product illustrations contain optional accessories.

Konica Minolta does not warrant that any prices or specifications mentioned will be error-free.

Specifications are subject to change without notice.

Microsoft, Windows and the Windows logo are trademarks, or registered trademarks, of Microsoft Corporation in the United States and/or other countries.

All other brand and product names may be registered trademarks or trademarks of their respective holders and are hereby acknowledged.



Printed in the UK on Revive Silk, a paper containing a minimum of 75% post consumer de-inked recycled waste, using soya based mineral-oil free inks.

Your Konica Minolta Business Solutions Partner:



Konica Minolta
Business Solutions (UK) Ltd
Precedent Drive, Rooksley
Milton Keynes MK13 8HF
Tel: 01908 200400
Email: info@bs.konicaminolta.co.uk