



KONICA MINOLTA

bizhub
750/600

For workgroups, bizhub can work wonders.



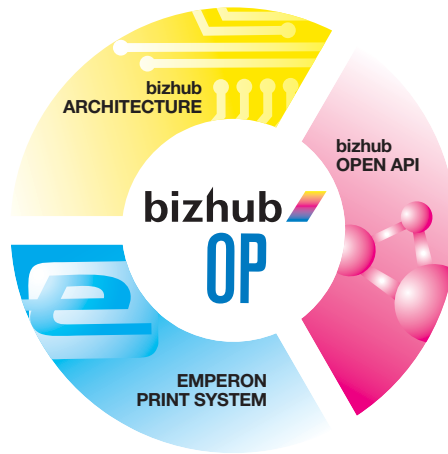
Printer/Copier/Scanner/Fax. Move information faster, in more directions, with better control and security. Increase print/copy output speed, with 300,000 page monthly duty cycle. Add print control, automated finishing and fax options. Enhance network power, manage documents, boost productivity.



bizhub 750/600 series proudly joins the bizhub family – named 2005 Product Line of the Year by Buyers Laboratory Inc.



The essentials of imaging



The advantage of bizhub OP.

The bizhub 750 and bizhub 600 share a significant productivity advantage over earlier generations of digital printer/copiers – an advantage called bizhub OP. It improves multifunctional efficiency with new architecture that consolidates components, simplifies print/scan/copy/fax operation through a common user interface, incorporates the Emperon™ Print System that empowers the advanced IC-202 Print Controller option, and provides future Open API* to give third-party designers greater flexibility in software integration. bizhub OP, for all-in-one multifunctional productivity that lets you manage total document input, output and storage – all from a single bizhub.

Centralize your document workflow.

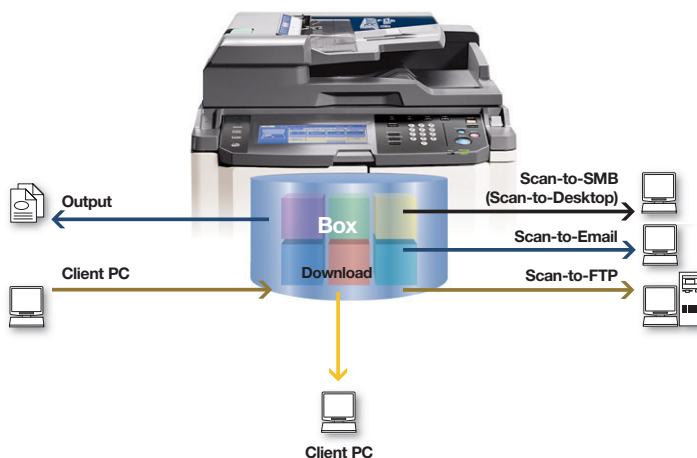
In every office, department and workgroup, people must communicate. Co-workers must collaborate. Information must reach the right destinations, available to the proper individuals and protected from unauthorized access. And scanning, throughput, and document output must all happen at high speed with workhorse reliability – to keep up with fast-changing business conditions and stay ahead of fast-moving competition. That’s why you need the power of bizhub, from Konica Minolta.

User Box – a useful advantage.

With optional hard drive, your bizhub 750 and bizhub 600 allow you to scan and save printed documents directly to User Boxes – saving the trouble of re-scanning frequently used documents and saving files to your desktop or a PC. Documents can be saved to Public Box (for access by all users), User Box (up to 115 individual boxes), or Secure Print Box (for confidential documents, with ID and password protection).

Fast scanning to multiple destinations.

Along with high-speed printing and copying, the bizhub 750/600 can scan and distribute documents more quickly and cost-efficiently than previous multifunctional devices. You can Scan-to-Email with LDAP and User Authentication to attach documents to Email messages, Scan-to-FTP to save files on your FTP server for sharing or archiving, Scan-to-SMB to send files directly to desktop PCs. You can also Scan-to-HDD, storing documents in secure User Box mailboxes on the optional 40 GB hard drive of your bizhub 750 or bizhub 600 – with industry-leading functionality to Save, Print, Route, Move and Copy documents and files. Information flows more quickly, to more destinations – and everyone stays in the loop.



Workhorse reliability – and total security.

You'll be able to handle the heaviest workgroup document traffic with output speed of 75 ppm (bizhub 750) and 60 ppm (bizhub 600). With monthly duty cycle of 300,000 impressions, your productivity will benefit from maximum output with minimum downtime. And you'll also have User Authentication, Account Track and special security enhancements to meet ISO 15408 Certification – because in today's networked workflow, maintaining document security and tracking document access are essential to every business and professional application.

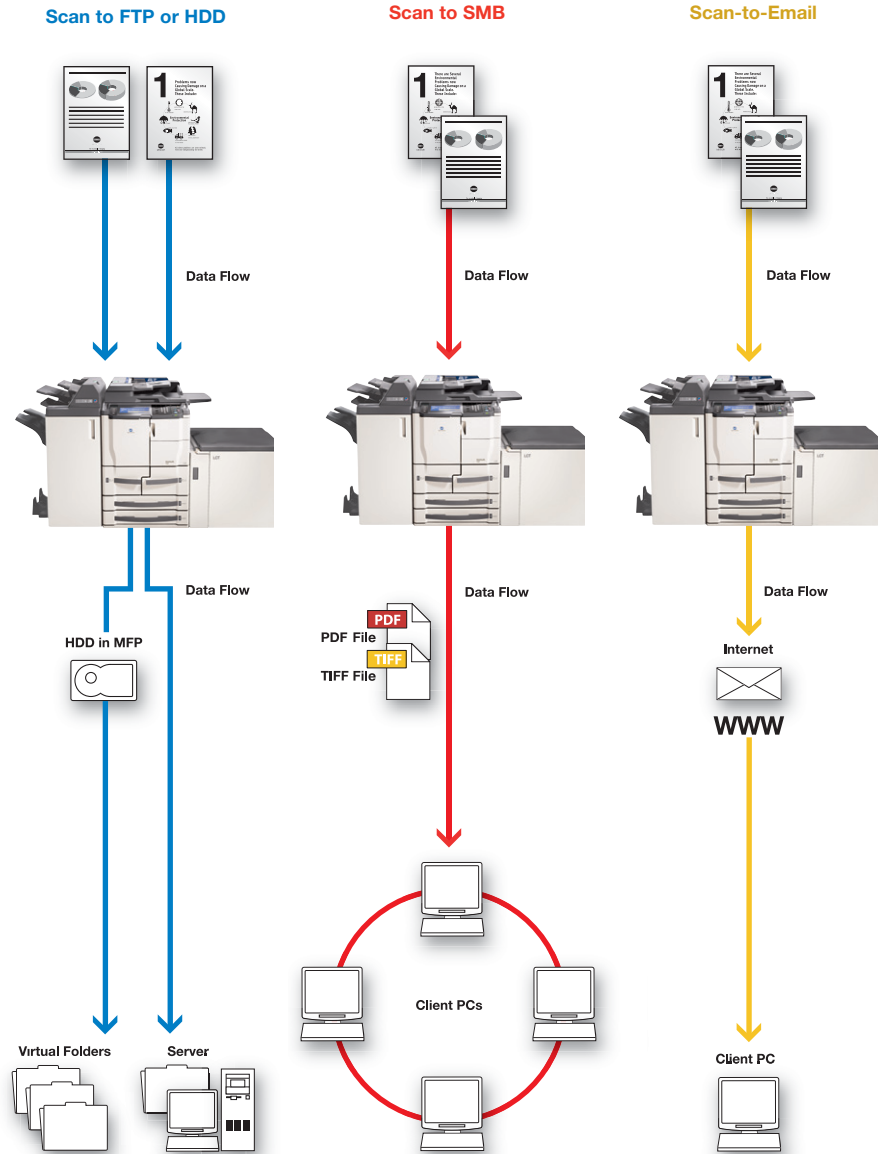
Finer detail and sharper text.

Along with speeding your workflow and protecting your information, the bizhub 750/600 can improve your image. Konica Minolta's exclusive Simitri® Polymerized Toner uses toner particles of smaller size and more consistent shape to improve detail and definition – making text more legible and giving graphics and halftones greater detail. Speed, simplicity, quality, performance – it's a combination that can boost your productivity and reduce your total cost of ownership.



Superior image quality.

Whether you're printing or copying reports, presentations, corporate communications materials, human resource documents, sales literature, training manuals or any other printed matter, Konica Minolta's exclusive Simitri® Polymerized Toner technology can make all your output look more professional.



- Scan-to-FTP:** move files to network FTP servers.
- Scan-to-HDD:** store files in secure User Boxes.
- Scan-to-SMB:** send files directly to desktop PCs.
- Scan-to-Email:** send documents as Email attachments.

More Ways to Print and Finish:

automatic stapling in 8 positions, 2/3-hole punching, tri-folding, z-folding, cover and sheet insertion, even saddle-stitched booklet making – with options, the bizhub 750 and bizhub 600 can do it all.



12" x 18" Printing & Copying:

the bizhub 750/600 can print and copy full-bleed 11" x 17" originals on 12" x 18" paper, preserving margins and crop marks.

Print on any paper you need.

The bizhub 750 and bizhub 600 are designed to handle all the documents your business needs – in whatever size and paper stock your application requires. You can load up to 110 lb. index stock in all paper trays. You can also print and copy full-bleed 11" x 17" originals on 12" x 18" paper, to preserve margins and crop marks – and print or copy 2-page spreads, ledger-size spreadsheets and oversized graphics without losing information. Add an optional 4,000-sheet Large Capacity Tray to your system, and you'll have 7,600-sheet maximum paper capacity – to let you work longer without reloading.

Finish documents with automated ease.

Individual business and professional applications have special document needs – but one need everyone shares is the need to save time. So the bizhub 750 and bizhub 600 offer a broad range of automatic finishing options, allowing you to sort, staple, hole-punch for binder insertion, half-fold and saddle-stitch staple to make booklets, and insert pre-printed covers and pages post-process. You can even tri-fold sheets to create direct-mail pieces – and z-fold pages to insert oversized charts into finished reports. A choice of finishers lets you equip your bizhub system with exactly the options you need – and you can also add options as document needs change and your business grows.

Accelerate your document output.

Whatever document you're printing, you'll want fast output – with automated finishing, to eliminate tedious handwork that can slow down productivity. The bizhub 750 and bizhub 600 both provide advanced finishing options for sorting, stapling, hole-punching, post-insertion, even folding and saddle-stitching for booklets.



Control your bizhub from any angle.

With all these capabilities for scanning, printing and finishing, you might think the bizhub 750 or bizhub 600 would need expert handling – but anyone can control its functions. Large function keys and simple, intuitive touch-screen menus make operation easy, even for first-time users or interns just passing through your workplace. And the control panel tilts in three positions, providing full compliance with Section 508 for easy access by individuals with disabilities.

Customizing your print system.



FS-504 and FS-505 Multi-Staple Finishers provide 50-sheet and 100-sheet stapling capacity.
(Not Shown)

ZU-602 Z-Fold/Punch Kit adds Z-fold and selectable 2/3-hole punch capability to your FS-504, FS-505 or FS-602 Finisher.
(Not Shown)

PK-505 Punch Kit adds selectable 2/3-hole punch capability to your FS-504, FS-505 or FS-602 Finisher.

Main Paper Drawers (2) hold up to 1,500 and 1,000 sheets respectively and handle 8-1/2" x 11" paper.



SF-601 Output Tray provides an alternate output bin to keep copies, prints and faxes sorted separately.

FS-602 Booklet Finisher provides half-fold and tri-fold, with saddle-stitch-stapling for booklets of up to 80 pages.

PI-501 Post Inserter lets you add pre-printed covers or insert pages post-process.

Electronic Document Handler operates at up to 75 opm, holds up to 100 sheets, accepts originals up to 11"x17".

Intelligent Bypass lets you load up to 100 sheets in sizes up to 12" x 18".



IC-202 Image Controller 650 MHz (bizhub 750) or 400 MHz (bizhub 600) CPU, Windows/Mac drivers, PCL5e/PCL6 and Postscript 3 print capability.

LU-401 Large Capacity Paper Tray holds up to 4,000 sheets of 8-1/2" x 11" paper.
(Not Shown)

LU-402 Large Capacity Paper Tray holds up to 4,000 sheets of up to 12" x 18" paper.

Universal Paper Drawers (2) hold up to 500 sheets per drawer, handle up to 12" x 18" paper.



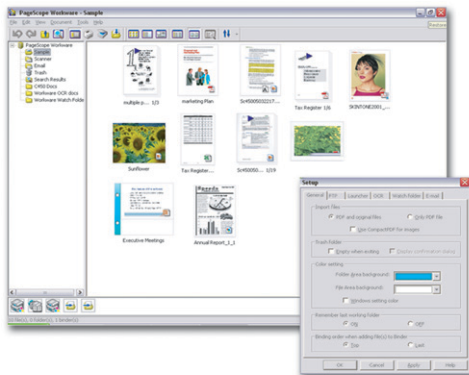


PAGESCOPE
SOFTWARE

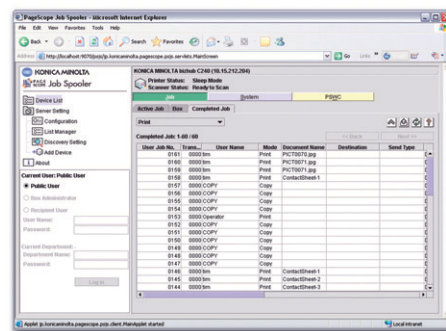


Empower your network control.

In today's networked office and workgroup environment, stand-alone printer/copiers can't keep up with interactive workflow demands. The bizhub 750 and bizhub 600 give you a simple, intuitive interface that lets you scan to multiple addresses and scan and route in a single step. You can print and finish with desktop control, manage print queues, even guide document traffic. And to keep work flowing smoothly, PageScope software provides unsurpassed networked device control and personal document management.



PageScope Workware (optional) allows you to preview documents as thumbnail images without opening files – then merge, print and distribute with drag-and-drop speed.



PageScope Job Spooler gives you networkable management of all your bizhub 750/600 print jobs.

Print control with simple interface.

With the embedded IC-202 Image Controller option, your bizhub 750/600 is controlled by simple print drivers with user-friendly point-and-click commands. Standard PCL5e/PCL6 and PostScript 3 capabilities give you flexible power to handle print production in any environment. Using the control panel of your bizhub 750 or bizhub 600, walk-up copying is simple enough to prevent long lines at the copier. And when you add Super G3 fax option, you'll have separate control menus that make fax functions just as fast and easy.

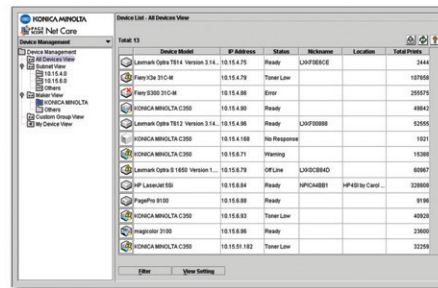
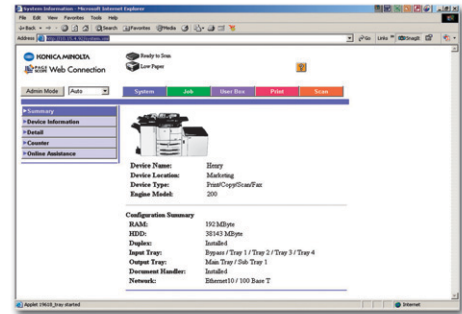
With bizhub, you'll always have connections.

PageScope Web Connection provides web-based device control via a simple, intuitive GUI. You can monitor device status, paper supply, toner level, copy count. No need to get up, walk to your bizhub, and see if it's ready to print. PageScope Net Care gives IT administrators the power to manage an entire fleet of multifunctional devices from a single point – including both Konica Minolta bizhub MFPs and MIB-compliant devices from other manufacturers. And PageScope Data Administrator™ lets you import one-touch Email addresses from LDAP-enabled Email servers and maintain uniform security data throughout your network.

Your personal document management solution.

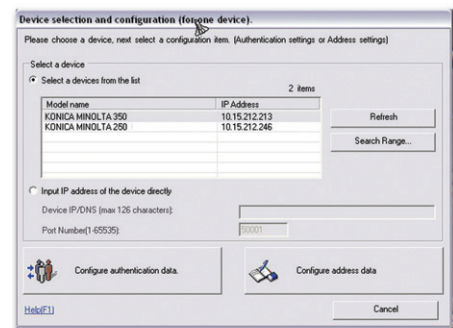
Konica Minolta's PageScope Workware software lets you organize, search and retrieve scanned documents with greater speed and simplicity. You can view documents as thumbnail images without opening files or applications, drag-and-drop images to share or print, even search your files by filename, date, tags, or a combination of criteria. You can also perform full-text search on documents that have been OCR-converted. PageScope Router is another valuable software option that automatically routes scanned files to multiple destinations, scans and distributes in a single step, converts file formats on the fly and provides automatic archiving to preserve document histories and paper trails. PageScope and bizhub were made for each other – and together, they can make your work flow faster.

PageScope Web Connection creates a "website" for your bizhub 750/600, for access to status information through standard web browsers.



PageScope Net Care provides one-point management capability for an entire fleet of devices – each identified by its own on-screen icon.

PageScope Data Administrator makes it easy to manage and update address and password information throughout your workgroup, department or network.





bizhub 750/600 Series

General Specifications

TYPE:
Digital Printer/Copier/Scanner/Fax

IMAGING SYSTEM:
Simitri® Polymerized Toner

SCANNING SYSTEM:
CCD Line Sensor

PRINT/COPY SPEED
bizhub 750:
75 ppm (letter) 8-1/2" x 11" portrait
61 ppm (letter) 8-1/2" x 11" landscape
50 ppm (legal) 8-1/2" x 14"
42 ppm (ledger) 11" x 17"
bizhub 600:
60 ppm (letter) 8-1/2" x 11" portrait
49 ppm (letter) 8-1/2" x 11" landscape
40 ppm (legal) 8-1/2" x 14"
34 ppm (ledger) 11" x 17"

MONTHLY DUTY CYCLE:
300,000 pages

PRINT/COPY RESOLUTION:
True 600 x 600 dpi; 1200 x 600 dpi (emulation)

HALFTONE REPRODUCTION:
256 gradations

MEMORY:
512 MB (standard)
40 GB (optional HDD)

WARM-UP TIME:
bizhub 750: 5 minutes or less
bizhub 600: 4.5 minutes or less

FIRST COPY:
bizhub 750: 3 seconds or less
bizhub 600: 3.5 seconds or less

COPY QUANTITY
1 - 9,999 copies
(countdown, interrupt capability)

MAGNIFICATION:
Zoom range:
25 - 400%, 0.1% increments
Preset reduction:
79%, 77%, 65%, 50%
Preset enlargement:
121%, 129%, 155%, 200%

EXPOSURE MODES:
Auto, Text, Photo, Text/Photo, Manual

ORIGINAL SIZE:
Up to 11" x 17" maximum

PAPER SIZE:
5-1/2" x 8-1/2" to 12" x 18"

PAPER WEIGHT:
16 lb bond to 110 lb. index
Manual bypass: 13 lb. bond to 110 lb. index; specialty paper (thick paper, OHP transparencies)

STANDARD PAPER SUPPLY:
1,500-sheet Paper Drawer (letter-landscape)
1,000-sheet Paper Drawer (letter-landscape)
500-sheet Universal Paper Drawers (2)
100-sheet Intelligent Bypass

OPTIONAL PAPER SUPPLY:
4,000-sheet Large Capacity Tray (letter-landscape)
4,000-sheet Large Capacity Tray (up to 12" x 18")

MAXIMUM PAPER CAPACITY:
7,600 sheets (total, with options)

DOCUMENT FEEDER:
Capacity: 100 sheets
Speed: up to 75 scans per minute
Original size: up to 11" x 17"
1-sided, 2-sided originals
Mixed Original Detection

POWER REQUIREMENTS:
120 V, 60 Hz, 16.0 A

POWER CONSUMPTION:
1.92 kW (max.)

DIMENSIONS (W x D x H):
25-5/8" x 31-1/8" x 44-7/8"

WEIGHT:
488 lbs.

OPTIONS:
EK-701 USB 2.0/Parallel Interface Kit (IEEE 1284)
FK-502 Fax Kit (requires MK-701)
FS-504 Staple Finisher (50-sheet capacity)
FS-505 Staple Finisher (100-sheet capacity)
FS-602 Booklet Finisher
HD-503 Hard Disk Drive (40 GB)
IC-202 Image Controller
LU-401 Large Capacity Tray (4000-sheet capacity, 8-1/2" x 11")
LU-402 Large Capacity Tray (4000-sheet capacity, up to 12" x 18")
MK-701 Fax Attachment Kit
PI-501 Post Insertor
PK-505 Punch Unit (2/3-hole; for FS-504, FS-505, FS-602)
SF-601 Shift Tray
ZU-602 Z-Fold Unit

PAGESCOPE APPLICATIONS:
Network & Device Management
PageScope Web Connection
PageScope Net Care
PageScope Network Setup
PageScope EMS Plug-Ins
PageScope NDPS Gateway
PageScope Data Administrator
PageScope Job Spooler
Document Workflow Management
PageScope Workware
PageScope Router

IC-202 Image Controller Option

TYPE:
Embedded

PROCESSOR:
bizhub 750: Intel Celeron 650 MHz
bizhub 600: Intel Celeron 400 MHz

MEMORY:
512 MB (standard)

NETWORK INTERFACE:
Ethernet 10-BaseT/100-BaseTX (standard)
Parallel (IEEE 1284 compatibility) and USB 2.0 (with optional EK-701 Interface Kit)

NETWORK PROTOCOLS:
TCP/IP, IPX/SPX, IPP (LPR/RTW socket), Ethertalk, NDS/Bindery, NetBEUI

SCANNING FUNCTIONS:
Scan-to-Email (with LDAP)
Scan-to-FTP
Scan-to-HDD (with optional HDD)
Scan-to-SMB (Scan-to-Desktop)

PRINT DRIVERS:
PostScript 3 driver:
Windows 98ME, NT4.0, 2000, XP, Windows 2003 Server, Mac OS 9.0 or later, Mac OS X (10.2/10.3)
PCL6 (emulation) driver:
Windows 98ME, NT4.0, 2000, XP, Windows 2003 Server

FK-502 Fax Option

COMMUNICATION LINE:
Public Switched Telephone Network (PSTN)

COMPATIBILITY:
G3, Super G3

DATA COMPRESSION:
MH, MR, MMR, JBIG

MODEM SPEED:
33.6 kbps (max; auto fallback)

TRANSMISSION SPEED:
Less than 3 seconds per page

SCANNING SPEED:
Up to 75 sheets per minute

FAX RESOLUTION:
200 x 100 dpi
200 x 200 dpi
400 x 400 dpi
600 x 600 dpi
Text Photo (200 x 200 dpi)
Grayscale (200 x 200 dpi)
Super Grayscale (400 x 400 dpi)



FK-502 Fax Option Continued

MEMORY:
32 MB (standard)

FAX TRANSMISSION/RECEPTION SIZE:
Up to 11" x 17"

DIALING:
200 one-touch dialing locations (standard)
400 (with HDD option)

BROADCAST:
600 destinations

OTHER FACSIMILE FUNCTIONS:
IP Relay Fax
PC Faxing

Available Print/Copy Functions*

Account Track (up to 1,000 accounts)
APS/AMS
Auto Duplex, Stackless
Auto/Manual/Photo Exposure
Auto Tray Switching
Black-White Reverse Image
Book Copy
Book Erase
Booklet Function
Box Function (Copier, Reprint with setting mode change, Resend)
Combined Copy Setting (2-in-1, 4-in-1)
Copy Job Reserve (queue) (51 jobs, including current job)
Cover Mode
Distribution Number and Stamping
Energy Save Mode
Erase (Edge/Frame)
Face Up/Face Down Output (selectable)
File Margin
Hole-Punching (2/3 hole)
Horizontal/Vertical Zoom Ratios (X/Y magnification)
Image Density Shift
Image Repeat
Image Reverse (mirror-image)
Image Rotation
Interrupt Mode
Job Memory (30 jobs)
Mixed Original Detection (letter/legal)
OHP Interleave
Original Position Adjustment
Page Insertion
Proof Copy
Separate Scanning
Sleep Mode Recovery
Stapling (single, multi-position, center)
Text, Photo, Text/Photo, Dot Matrix Modes
Zoom



© 2006 KONICA MINOLTA BUSINESS SOLUTIONS U.S.A., INC. All rights reserved. Reproduction in whole or in part without written permission is prohibited. Konica Minolta and The essentials of imaging are trademarks of KONICA MINOLTA HOLDINGS, INC. bizhub, Data Administrator, and PageScope are trademarks of KONICA MINOLTA BUSINESS TECHNOLOGIES, INC. Simitri is a registered trademark of KONICA MINOLTA BUSINESS SOLUTIONS. All other brands and product names are registered trademarks or trademarks of their respective owners.

Design & specifications subject to change without notice.

*Some functions may require options, which may or may not be available at time of launch.

bizhub 750/600



KONICA MINOLTA

KONICA MINOLTA BUSINESS SOLUTIONS U.S.A., INC.

100 Williams Drive
Ramsey, NJ 07446

www.kmbs.konicaminolta.us
www.kmbs.konicaminolta.us/solutions