



KONICA MINOLTA

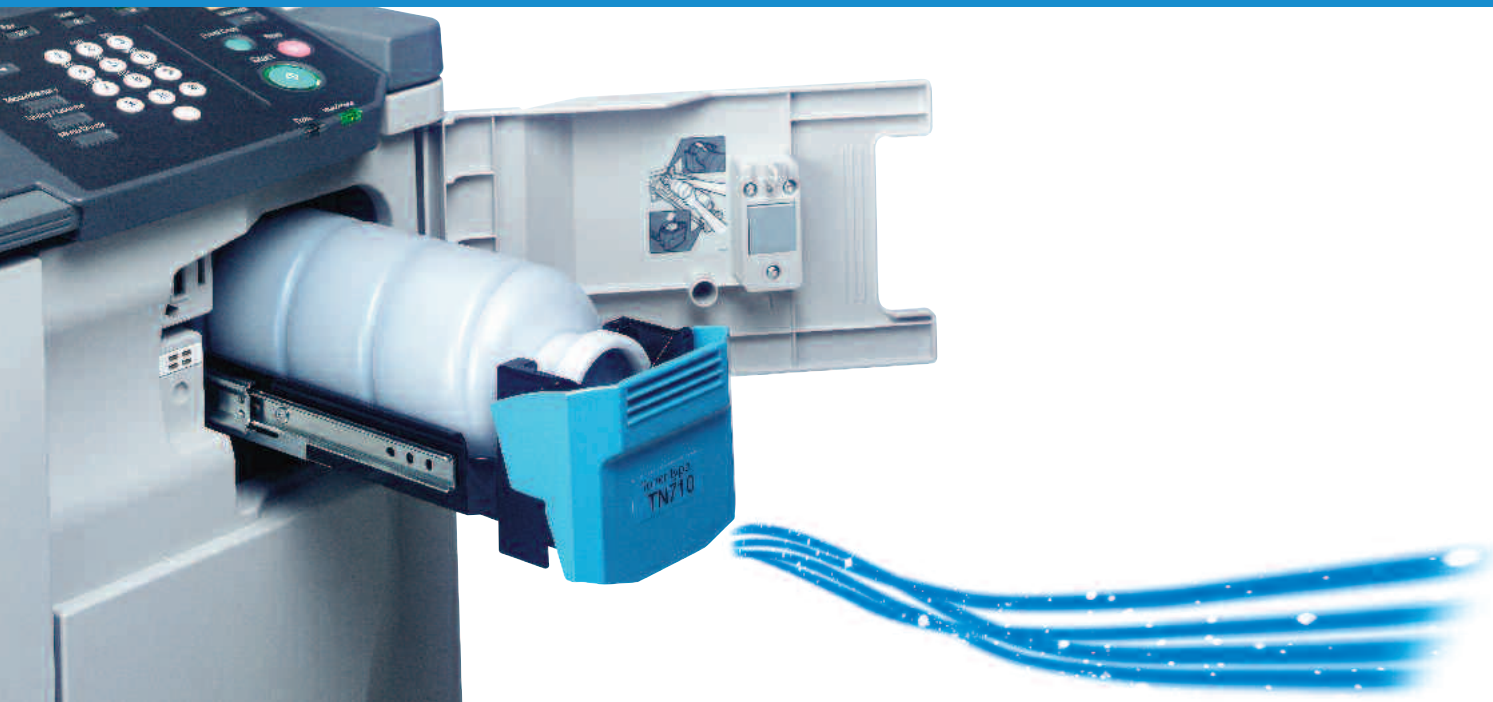
Office system bizhub 600



bizhub 600

Brilliance in black-and-white

The essentials of imaging



Add some brilliance to

➔ **Volume imaging with a brilliant difference**

Your documents are important. And when you need large quantities of prints or copies, speed and quality matter.

We have a brilliant idea for you:
The new bizhub 600 from Konica Minolta.

We designed this multifunctional network device with your needs in mind.
Thanks to Konica Minolta's Emperon™ print technology, you don't have to cut back on quality even when volume and speed are of prime importance.

You can rely on the results: Brilliant high-resolution black-and-white prints and copies, and of course professional finishing.

Printer, copier, scanner and fax (from early 2006) machine:

The bizhub 600 offers the communication and networking capabilities that large departments, agencies, and organisations require in today's global community.

Brilliant!

bizhub 600





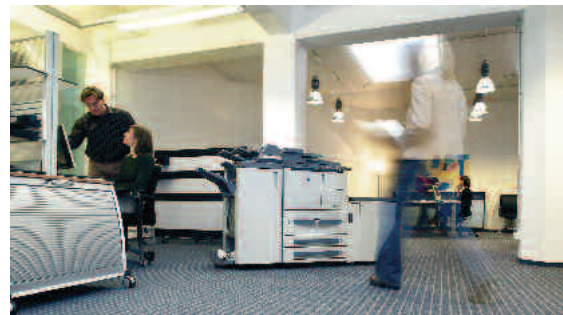
→ Communicative features

Speed, convenience, flexibility. Busy enterprises require dependable solutions to their imaging and communications requirements.

The new bizhub 600 is a versatile black-and-white multifunctional device with unprecedented performance capabilities. Large-scale mailings, brochures and high volume printed matter: The bizhub 600 can do it all.

Its features are designed to simplify operations and increase productivity in large and busy departments. For a start, advanced network printing and scanning means that every authorised employee can access the bizhub 600 from their desktop PC. And all aspects of the system's status can be checked online.

The bizhub 600 has many answers for you. Here are just a few of the ways in which it can improve your productivity and efficiency.



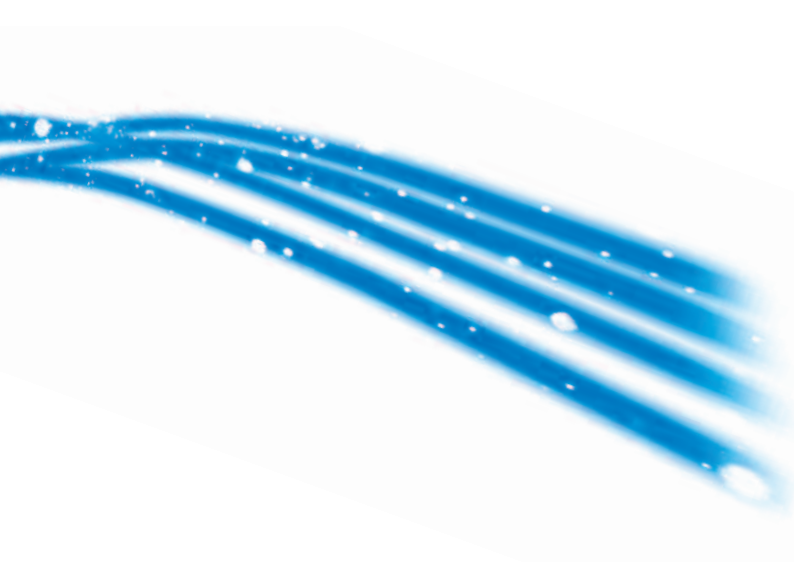
your business





- **Multifunctional:**
You don't need separate printers, copiers, fax (from early 2006) machines, or scanning devices. It's all here in one compact unit, allowing for a greater utilisation of your network resources. Using features such as scan-to-eMail – the sharing and distribution of information has never been easier. Thanks to the large memory capacity, multiple jobs can be pre-programmed and managed simultaneously. In addition, the optional hard disk turns the bizhub 600 into an effective document server and archiving system.
- **Speed:**
Swiftness is the name of the game in today's business world. Big print runs require fast processing and undisturbed usage. The bizhub 600 prints and copies up to 60 A4 pages and up to 35 A3 pages per minute. To maximise productivity, paper and toner can be refilled on the fly, allowing for a smooth and continuous workflow and high up-times.

Brilliant communication solutions



- **High volume:**
If you require large print runs, then the bizhub 600 is an ideal solution. It comes equipped with an automatic 100-sheet document feeder that scans up to 75 originals per minute. The large paper supply of up to 7,600 sheets (with 4,000 sheet LCC option fitted) suits its high output capacity, and the bizhub 600 is robust too.
- **High quality results:**
Thanks to Simitri™, Konica Minolta's innovative extra fine polymerised toner, you get the best black-and-white prints and copies possible. Halftone definition and solid fills are better than ever.



stapling



colour sheet insertion,
booklet



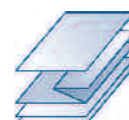
booklet with cover



four-hole punching



two-hole punching



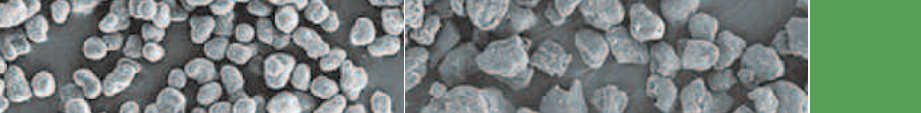
z-fold



tri-fold

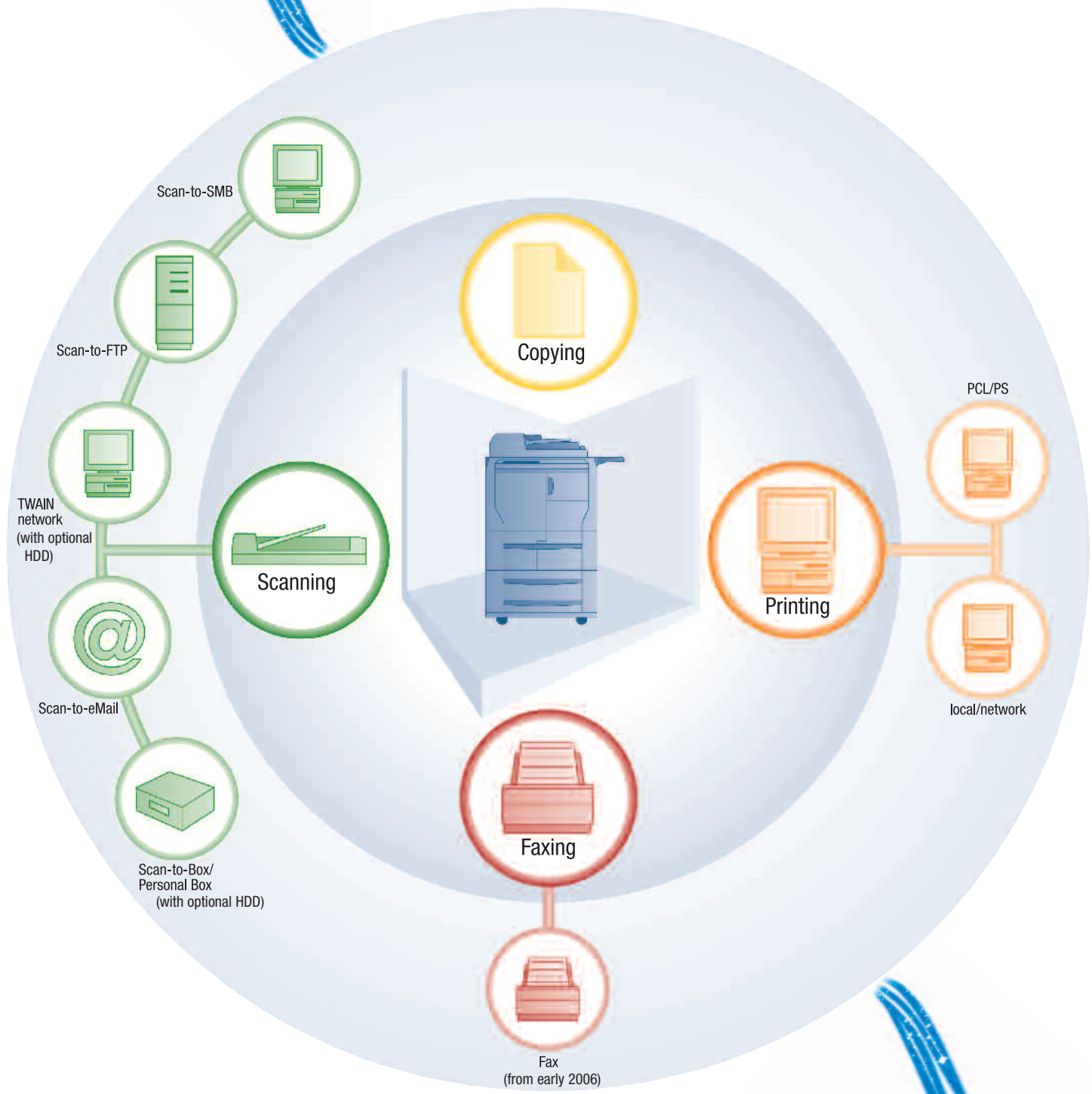


booklet maker



Simitri™ polymerised toner

Conventional toner



■ From business cards to booklets: The bizhub 600 can process paper ranging from A6 to A3+ in size (max. 314 x 458mm), and from 50g/m² to 200g/m² in weight, you can produce countless types of printed documents necessary for your line of business.

■ Automatic online finishing options include offsetting, stapling, punching, three different folding functions, and complete booklet production.



A brilliant idea for **brilliant results**

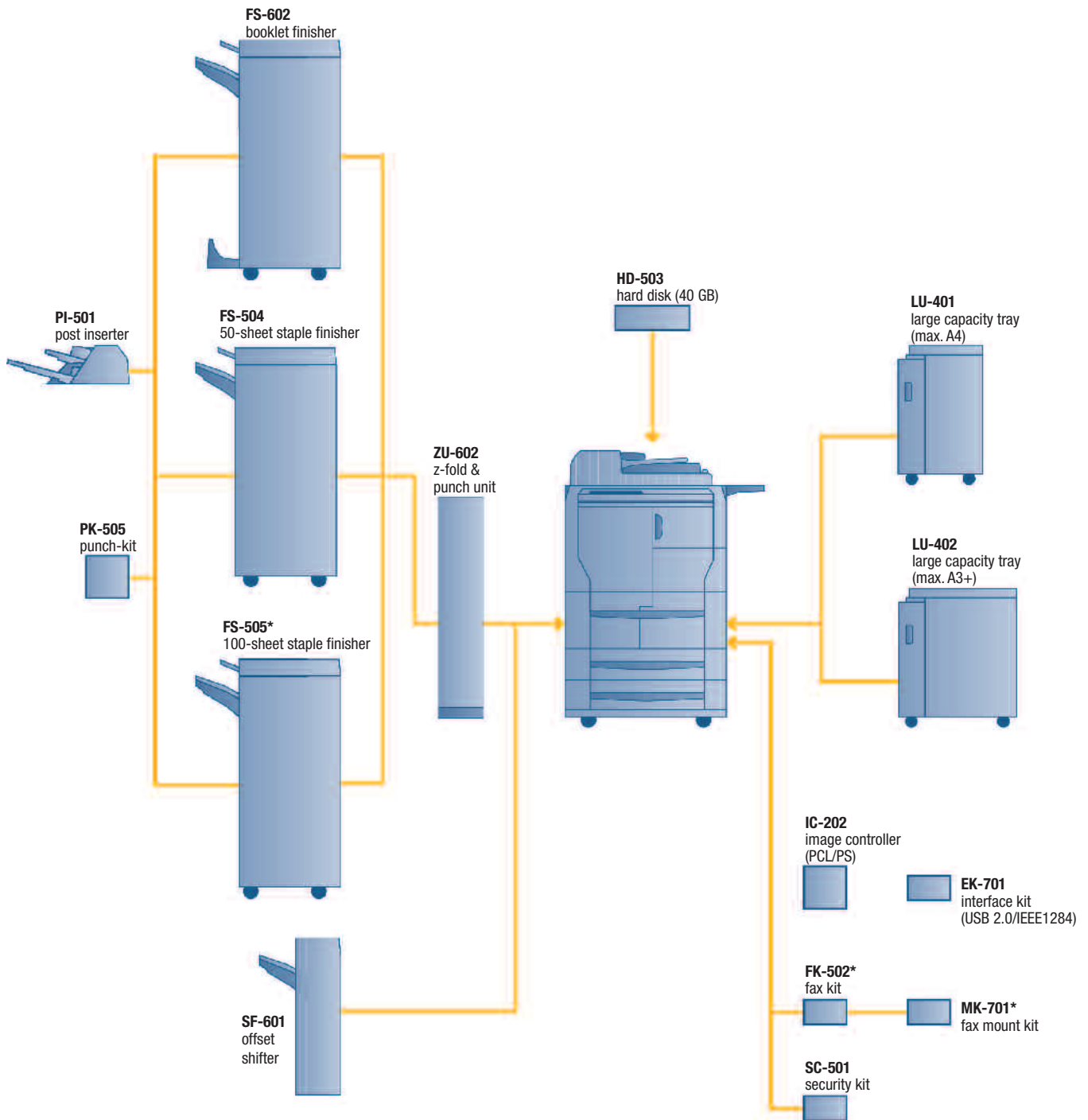
Quality that convinces

User-friendly, cost-effective, and fast. The bizhub 600 combines many features you and your place of business need.

It is an ideal high-performance document production system and versatile communications tool designed to the highest quality standards. Its proven reliability, superb black-and-white imaging, virtually limitless finishing flexibility and network capabilities mean that the bizhub 600 could be the start of a brilliant future.



Your options at a glance



* from early 2006



KONICA MINOLTA

Simitri



CITRIX



Technical specifications

Copier specifications

Copying process

Electrostatic laser copy

Toner system

Polymerised toner

Copy/print speed A4

60 ppm/cpm

Copy/print speed A3

35 ppm/cpm

1st Copy/print time

3.3 sec. (A4)

Warm-up time

Approx. 270 sec.

Copy resolution

1,200 x 600 dpi (interpolated)

Gradation

Equivalent to 256 gradations

Multicopy

1–9,999, countdown, interruption mode

Original format

A5–A3

Magnification

25–400% in 0.1% steps

Copier memory

512 MB std./max.

Copier hard disk (optional)

40 GB

Copy features

Chapter/image insertion, booklet creation, combination N-in-1, image rotation, stamp/watermark, job reserve

Printer specifications (optional)

Print resolution

Max.: 2,400 x 600 dpi (interpolated)

Controller CPU

Intel Celeron 400 MHz

Page description language

PCL5e/6

PostScript 3

Operating systems

Windows 98/ME/NT4.0/2000/XP/2003 Server
Macintosh 9.x/10.2/10.3

Interface

10BaseT/100BaseTX Ethernet (standard),
USB 2.0 (optional),
IEEE 1284 (optional)

Printer memory

512 MB (shared with copier)

Printer hard disk (optional)

40 GB (shared with copier)

Scanner specifications

Scan speed

Up to 75 opm (A4)

Scan resolution

Max.: 600 x 600 dpi

Scan modes

TWAIN scan*
Scan-to-eMail
Scan-to-FTP
Scan-to-SMB
Scan-to-Box/HDD*
(*with optional hard disk)

File formats

TIFF, PDF

Scan destinations

LDAP support

Fax specifications (optional)**

Fax standard

Super G3

Fax resolution

Max.: 600 x 600 dpi (ultra-fine)

Fax compression

MH, MR, MMR, JBIG

Fax modem

Up to 33.6 Kbps

Fax memory

512 MB (shared with copier)

Fax functions

Polling, memory transmission, broadcasting, PC fax

System specifications

Automatic document feeder (standard)

Up to 100 originals

Paper size

A6–A3 full bleed

Paper weight

60–200 g/m² (from all paper trays)
50–200 g/m² (from bypass)

Paper input capacity

Standard: 3,600 sheets
Max.: 7,600 sheets (optional)

Output capacity

Up to 3,200 sheets (optional)

Automatic duplexing (standard)

A5–A3 full bleed
60–200 g/m²

Finishing modes (optional)

Offset, group, sort, staple,
punch (2/4 holes),
z-/centre-/3-fold, booklet

Power consumption

2,000 Watt (system)

System dimension (WxDxH mm)

650 x 791 x 1,140 (incl. feeder)

System weight

Approx. 222 kg (incl. feeder)

System features

Accounting

1,000 user accounts
Active directory support
(user name + password)
User function access definition

Software

PageScope NetCare
PageScope NetSetup
PageScope Data Administrator
PageScope Workware

** from early 2006

All specifications relating to paper capacity refer to A4-sized paper of 80 g/m² quality.

All specifications relating to scanning, copying or printing speeds refer to A4-sized paper that is scanned, copied or printed crosswise in multipage, simplex mode.

The memory capacities listed refer to A4-sized paper.

Some of the product illustrations contain optional accessories.

Konica Minolta does not warrant that any prices or specifications mentioned will be error-free.

Specifications are subject to change without notice.

Microsoft, Windows, and the Windows logo are trademarks, or registered trademarks of Microsoft Corporation in the United States and/or other countries.

All other brand and product names may be registered trademarks or trademarks of their respective holders and are hereby acknowledged.

Printed in UK.

Konica Minolta
Business Solutions (UK) Ltd

Direct Operations
Miles Gray Road, Basildon
Essex, SS14 3AR
Tel: 0800 833864
Fax: 01268 282480
www.konicaminolta.co.uk